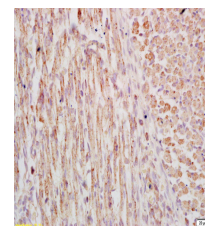


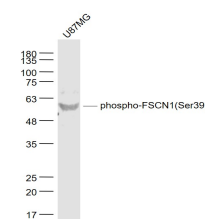
## Product Datasheet

### FSCN1(Ser39) Polyclonal Antibody GRP304

|                            |  |
|----------------------------|--|
| <b>Description</b>         | Organizes filamentous actin into bundles with a minimum of 4.1:1 actin/fascin ratio. Plays a role in the organization of actin filament bundles and the formation of microspikes, membrane ruffles, and stress fibers. Important for the formation of a diverse set of cell protrusions, such as filopodia, and for cell motility and migration. |
| <b>Species/Host</b>        | Rabbit   |
| <b>Reactivity</b>          | Human, Mouse, Rat, Dog   |
| <b>Conjugation</b>         | Unconjugated   |
| <b>Tested Applications</b> | IHC-P, WB  |
| <b>Immunogen</b>           | KLH conjugated synthetic phosphopeptide derived from human FSCN1 around the phosphorylation site of Ser39 (public_immunogen_range: 15-65/493)  |
| <b>Form/Appearance</b>     | Aqueous buffered solution containing 1% BSA, 50% glycerol and 0.09% sodium azide.  |
| <b>Concentration</b>       | 1ug/ul   |
| <b>Storage</b>             | Store at -20°C for 12 months.  |
| <b>Note</b>                | For research use only.   |
| <b>Isotype</b>             | IgG  |
| <b>Clonality</b>           | Polyclonal   |
| <b>Purity</b>              | Purified by Protein A.   |
| <b>Uniprot ID</b>          | <b>Q16658</b>  |
| <b>Entrez</b>              | <b>6624</b>  |
| <b>Dilution Range</b>      | WB: 1:300-1000, IHC-P: 1:200-400   |



WB of GRP304



IHC-P of GRP304