

Product Datasheet

PCNA Polyclonal Antibody GRP300

Description

Auxiliary protein of DNA polymerase delta and is involved in the control of eukaryotic DNA replication by increasing the polymerase's processibility during elongation of the leading strand. Induces a robust stimulatory effect on the 3'-5' exonuclease and 3'-phosphodiesterase, but not apurinic-apyrimidinic (AP) endonuclease, APEX2 activities. Has to be loaded onto DNA in order to be able to stimulate APEX2. Plays a key role in DNA damage response (DDR) by being conveniently positioned at the replication fork to coordinate DNA replication with DNA repair and DNA damage tolerance pathways. Acts as a loading platform to recruit DDR proteins that allow completion of DNA replication after DNA damage and promote postreplication repair: Monoubiquitinated PCNA leads to recruitment of translesion (TLS) polymerases, while 'Lys-63'-linked polyubiquitination of PCNA is involved in error-free pathway and employs recombination mechanisms to synthesize across the lesion.

Species/Host

Rabbit

Reactivity

Human, Mouse, Rat

Conjugation

Unconjugated

Tested Applications

IHC-P, WB

Immunogen

KLH conjugated synthetic peptide derived from human PCNA (public_immunogen_range: 220-260/261)

Form/Appearance

Aqueous buffered solution containing 1% BSA, 50% glycerol and 0.09% sodium azide.

Concentration

1ug/ul

Storage

Store at -20°C for 12 months.

Note

For research use only.

Isotype

IgG

Clonality

Polyclonal

Purity

Purified by Protein A.

Uniprot ID

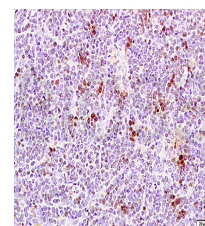
P12004

Entrez

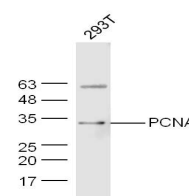
5111

Dilution Range

WB: 1:300-1000, IHC-P: 1:200-400



WB of GRP300



IHC-P of GRP300