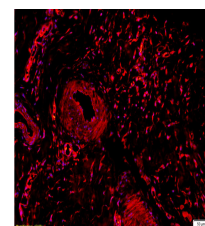


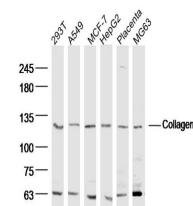
Product Datasheet

Collagen 2 Polyclonal Antibody GRP291

Description	Type II collagen is specific for cartilaginous tissues. It is essential for the normal embryonic development of the skeleton, for linear growth and for the ability of cartilage to resist compressive forces.
Species/Host	Rabbit
Reactivity	Human, Mouse, Rat, Rabbit
Conjugation	Unconjugated
Tested Applications	ELISA, IHC-P, WB
Immunogen	KLH conjugated synthetic peptide derived from human Collagen (public_immunogen_range: 1230-1280/1487)
Form/Appearance	Aqueous buffered solution containing 1% BSA, 50% glycerol and 0.09% sodium azide.
Concentration	1ug/ul
Storage	Store at -20°C for 12 months.
Note	For research use only.
Isotype	IgG
Clonality	Polyclonal
Purity	Purified by Protein A.
Uniprot ID	P02458
Entrez	1280
Dilution Range	WB: 1:300-1000, ELISA: 1:500-1000, IHC-P: 1:200-400



WB of GRP291



IHC-P of GRP291