

## Product Datasheet

### Connexin 43 Polyclonal Antibody GRP285

#### Description

Gap junction protein that acts as a regulator of bladder capacity. A gap junction consists of a cluster of closely packed pairs of transmembrane channels, the connexons, through which materials of low MW diffuse from one cell to a neighboring cell. May play a critical role in the physiology of hearing by participating in the recycling of potassium to the cochlear endolymph. Negative regulator of bladder functional capacity: acts by enhancing intercellular electrical and chemical transmission, thus sensitizing bladder muscles to cholinergic neural stimuli and causing them to contract (By similarity).

#### Species/Host

Rabbit

#### Reactivity

Human, Mouse, Rat, Dog

#### Conjugation

Unconjugated

#### Tested Applications

FC, ICC, IF, IHC-P, WB

#### Immunogen

KLH conjugated synthetic peptide derived from human Connexin-43 (public\_immunogen\_range: 232-282/282)

#### Form/Appearance

Aqueous buffered solution containing 1% BSA, 50% glycerol and 0.09% sodium azide.

#### Concentration

1ug/ul

#### Storage

Store at -20°C for 12 months.

#### Note

For research use only.

#### Isotype

IgG

#### Clonality

Polyclonal

#### Purity

Purified by Protein A.

#### Uniprot ID

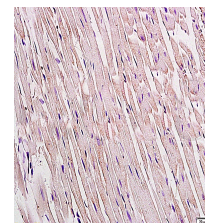
**P17302**

#### Entrez

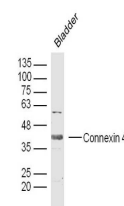
**2697**

#### Dilution Range

WB: 1:300-1000, FC: 1:20-100, IHC-P: 1:200-400, IF: 1:50-200



WB of GRP285



IHC-P of GRP285