

Product Datasheet

Connexin 43 Polyclonal Antibody GRP285

Description

Gap junction protein that acts as a regulator of bladder capacity. A gap junction consists of a cluster of closely packed pairs of transmembrane channels, the connexons, through which materials of low MW diffuse from one cell to a neighboring cell. May play a critical role in the physiology of hearing by participating in the recycling of potassium to the cochlear endolymph. Negative regulator of bladder functional capacity: acts by enhancing intercellular electrical and chemical transmission, thus sensitizing bladder muscles to cholinergic neural stimuli and causing them to contract (By similarity).

Species/Host

Rabbit

Reactivity

Human, Mouse, Rat, Dog

Conjugation

Unconjugated

Tested Applications

FC, ICC, IF, IHC-P, WB

Immunogen

KLH conjugated synthetic peptide derived from human Connexin-43 (public_immunogen_range: 232-282/282)

Form/Appearance

Aqueous buffered solution containing 1% BSA, 50% glycerol and 0.09% sodium azide.

Concentration

1ug/ul

Storage

Store at -20°C for 12 months.

Note

For research use only.

Isotype

IgG

Clonality

Polyclonal

Purity

Purified by Protein A.

Uniprot ID

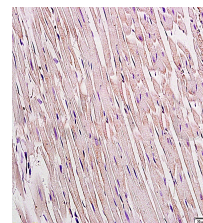
P17302

Entrez

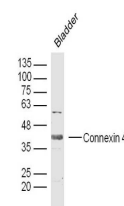
2697

Dilution Range

WB: 1:300-1000, FC: 1:20-100, IHC-P: 1:200-400, IF: 1:50-200



WB of GRP285



IHC-P of GRP285