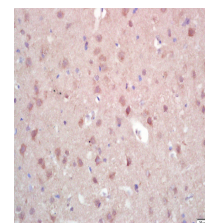


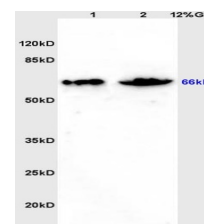
Product Datasheet

ZNF300 Polyclonal Antibody GRP277

Description	ZNF300 contains C2H2 (or Kruppel)-type zinc finger motifs that tetrahedrally coordinate zinc ions and form a protein structure that can bind DNA and regulate transcription (Gou et al.,2004 [PubMed 14746915]). ZNF300 belongs to the krueppel C2H2 type zinc finger protein family. It contains twelve C2H2 type zinc fingers and one KRAB domain. ZNF300 has a transcriptional repressor activity. Expressed mostly in heart, skeletal muscle and brain. Isoforms 1 and 2 are highly expressed in testis. There are three named isoforms.
Species/Host	Rabbit
Reactivity	Human
Conjugation	Unconjugated
Tested Applications	IHC-P, WB
Immunogen	KLH conjugated synthetic peptide derived from human ZNF300 (public_immunogen_range: 180-230/604)
Form/Appearance	Aqueous buffered solution containing 1% BSA, 50% glycerol and 0.09% sodium azide.
Concentration	1ug/ul
Storage	Store at -20°C for 12 months.
Note	For research use only.
Isotype	IgG
Clonality	Polyclonal
Purity	Purified by Protein A.
Uniprot ID	Q96RE9
Entrez	91975
Dilution Range	WB: 1:300-1000, IHC-P: 1:200-400



WB of GRP277



IHC-P of GRP277