

Product Datasheet

Survivin Polyclonal Antibody GRP276

Description

Multitasking protein that has dual roles in promoting cell proliferation and preventing apoptosis. Component of a chromosome passage protein complex (CPC) which is essential for chromosome alignment and segregation during mitosis and cytokinesis. Acts as an important regulator of the localization of this complex; directs CPC movement to different locations from the inner centromere during prometaphase to midbody during cytokinesis and participates in the organization of the center spindle by associating with polymerized microtubules. The complex with RAN plays a role in mitotic spindle formation by serving as a physical scaffold to help deliver the RAN effector molecule TPX2 to microtubules. May counteract a default induction of apoptosis in G2/M phase. The acetylated form represses STAT3 transactivation of target gene promoters. May play a role in neoplasia. Inhibitor of CASP3 and CASP7. Isoform 2 and isoform 3 do not appear to play vital roles in mitosis. Isoform 3 shows a marked reduction in its anti-apoptotic effects when compared with the displayed wild-type isoform.

Species/Host

Rabbit

Reactivity

Human, Mouse, Rat

Conjugation

Unconjugated

Tested Applications

FC, IHC-P

Immunogen

KLH conjugated synthetic peptide derived from human Survivin (public_immunogen_range: 93-142/142)

Form/Appearance

Aqueous buffered solution containing 1% BSA, 50% glycerol and 0.09% sodium azide.

Concentration

1ug/ul

Storage

Store at -20°C for 12 months.

Note

For research use only.

Isotype

IgG

Clonality

Polyclonal

Purity

Purified by Protein A.

Uniprot ID

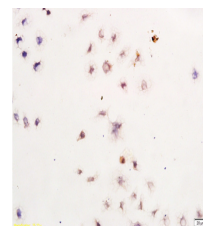
O15392

Entrez

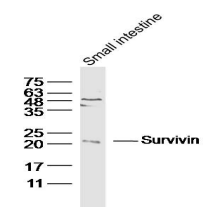
332

Dilution Range

FC: 1:20-100, IHC-P: 1:200-400



WB of GRP276



IHC-P of GRP276