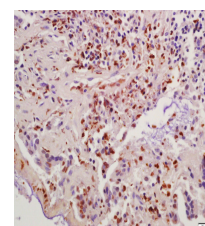


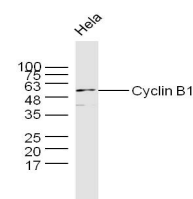
Product Datasheet

Cyclin B1 Polyclonal Antibody GRP268

Description	The protein encoded by this gene is a regulatory protein involved in mitosis. The gene product complexes with p34(cdc2) to form the maturation-promoting factor (MPF). Two alternative transcripts have been found, a constitutively expressed transcript and a cell cycle-regulated transcript, that is expressed predominantly during G2/M phase. The different transcripts result from the use of alternate transcription initiation sites. [provided by RefSeq, Jul 2008].
Species/Host	Rabbit
Reactivity	Human, Mouse, Rat
Conjugation	Unconjugated
Tested Applications	FC, ICC, IF, IHC-P, WB
Immunogen	KLH conjugated synthetic peptide derived from mouse Cyclin B1 (public_immunogen_range: 380-420/430)
Form/Appearance	Aqueous buffered solution containing 1% BSA, 50% glycerol and 0.09% sodium azide.
Concentration	1ug/ul
Storage	Store at -20°C for 12 months.
Note	For research use only.
Isotype	IgG
Clonality	Polyclonal
Purity	Purified by Protein A.
Uniprot ID	P24860
Entrez	268697
Dilution Range	WB: 1:300-1000, FC: 1:20-100, IHC-P: 1:200-400, IF: 1:50-200



WB of GRP268



IHC-P of GRP268