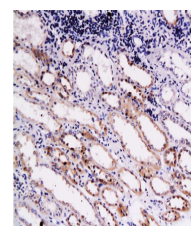


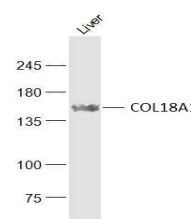
Product Datasheet

Endostatin Polyclonal Antibody GRP263

Description	COLA18A probably plays a major role in determining the retinal structure as well as in the closure of the neural tube. Endostatin potentially inhibits endothelial cell proliferation and angiogenesis. May inhibit angiogenesis by binding to the heparan sulfate proteoglycans involved in growth factor signaling.
Species/Host	Rabbit
Reactivity	Human, Mouse, Rat
Conjugation	Unconjugated
Tested Applications	IHC-P, WB
Immunogen	KLH conjugated synthetic peptide derived from human COL18A1/Endostatin (public_immunogen_range: 1600-1650/1754)
Form/Appearance	Aqueous buffered solution containing 1% BSA, 50% glycerol and 0.09% sodium azide.
Concentration	1ug/ul
Storage	Store at -20°C for 12 months.
Note	For research use only.
Isotype	IgG
Clonality	Polyclonal
Purity	Purified by Protein A.
Uniprot ID	P39060
Entrez	80781
Dilution Range	WB: 1:300-1000, IHC-P: 1:200-400



WB of GRP263



IHC-P of GRP263