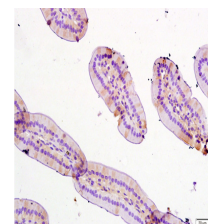


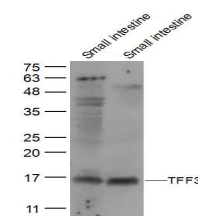
Product Datasheet

TFF3 Polyclonal Antibody GRP260

Description	Involved in the maintenance and repair of the intestinal mucosa. Promotes the mobility of epithelial cells in healing processes (motogen).
Species/Host	Rabbit
Reactivity	Human, Mouse, Rat
Conjugation	Unconjugated
Tested Applications	FC, IHC-P
Immunogen	KLH conjugated synthetic peptide derived from human TFF3 (public_immunogen_range: 50-80/80)
Form/Appearance	Aqueous buffered solution containing 1% BSA, 50% glycerol and 0.09% sodium azide.
Concentration	1ug/ul
Storage	Store at -20°C for 12 months.
Note	For research use only.
Isotype	IgG
Clonality	Polyclonal
Purity	Purified by Protein A.
Uniprot ID	Q07654
Entrez	7033
Dilution Range	FC: 1:20-100, IHC-P: 1:200-400



WB of GRP260



IHC-P of GRP260