

## Product Datasheet

### PPAR gamma Polyclonal Antibody GRP259

#### Description

The PPAR gamma antibody mainly is exist in the white fat organization, the fat for the PPAR gamma is born, blood sugar stability, the disease respond, the artery gruel kind hardens to rise the important function with the tumor occurrence of etc. all, but concerning the PPAR gamma to bone of function is a new research heat to order in recent years. A PPAR of many researches report gamma was go together with the body is after activate can the function promote many capable cells divided to increase to living but repress the ossification cell to divide to cause the bone measure the decrease or bone softs toward the fat cell in the marrow, the PPAR gamma promotes the ability and bones that the fat cell divide metabolize closely related, the performance is increasing along with the growth marrow fat content of the age, the ossification cell metabolism the outcome reduce, the different construction PPAR gamma 2 have the important function.

#### Species/Host

Rabbit

#### Reactivity

Human, Mouse, Rat, Pig, Bovine, Chicken

#### Conjugation

Unconjugated

#### Tested Applications

FC, IHC-P, WB

#### Immunogen

KLH conjugated synthetic peptide derived from human PPAR Gamma (public\_immunogen\_range: 160-210/505)

#### Form/Appearance

Aqueous buffered solution containing 1% BSA, 50% glycerol and 0.09% sodium azide.

#### Concentration

1ug/ul

#### Storage

Store at -20°C for 12 months.

#### Note

For research use only.

#### Isotype

IgG

#### Clonality

Polyclonal

#### Purity

Purified by Protein A.

#### Uniprot ID

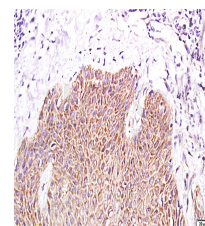
**P37231**

#### Entrez

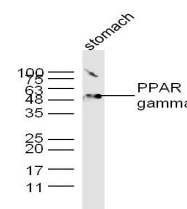
**5468**

#### Dilution Range

WB: 1:300-1000, FC: 1:20-100, IHC-P: 1:200-400



WB of GRP259



IHC-P of GRP259