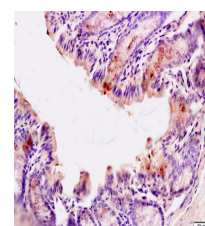


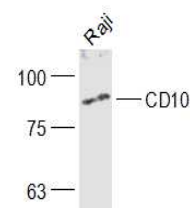
Product Datasheet

CD10 Polyclonal Antibody GRP258

Description	Thermolysin-like specificity, but is almost confined on acting on polypeptides of up to 3 amino acids. Biologically important in the destruction of opioid peptides such as Met- and Leu-enkephalins by cleavage of a Gly-Phe bond. Able to cleave angiotensin-1, angiotensin-2 and angiotensin 1-9. Involved in the degradation of atrial natriuretic factor (ANF). Displays UV-inducible elastase activity toward skin preelastic and elastic fibers.
Species/Host	Rabbit
Reactivity	Human, Mouse, Rat
Conjugation	Unconjugated
Tested Applications	FC, IHC-P, WB
Immunogen	KLH conjugated synthetic peptide derived from human CD10 (public_immunogen_range: 500-550/750)
Form/Appearance	Aqueous buffered solution containing 1% BSA, 50% glycerol and 0.09% sodium azide.
Concentration	1ug/ul
Storage	Store at -20°C for 12 months.
Note	For research use only.
Isotype	IgG
Clonality	Polyclonal
Purity	Purified by Protein A.
Uniprot ID	P08473
Entrez	4311
Dilution Range	WB: 1:300-1000, FC: 1:20-100, IHC-P: 1:200-400



WB of GRP258



IHC-P of GRP258