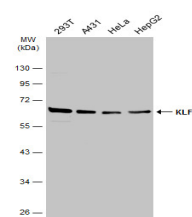


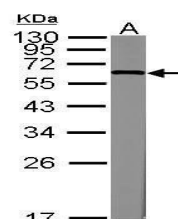
Product Datasheet

KLF4 antibody GRP23

Description	Transcription factor which acts as both an activator and repressor. Binds the CACCC core sequence. Binds to multiple sites in the 5'-flanking region of its own gene and can activate its own transcription. Required for establishing the barrier function of the skin and for postnatal maturation and maintenance of the ocular surface. Involved in the differentiation of epithelial cells and may also function in skeletal and kidney development.
Species/Host	Rabbit
Reactivity	Human, Mouse, Rat
Conjugation	Unconjugated
Tested Applications	FACS, ICC, IF, IP, WB
Immunogen	Recombinant protein encompassing a sequence within the C-terminus region of human KLF4. The exact sequence is proprietary.
Form/Appearance	Liquid: 1XPBS, 1% BSA, 20% Glycerol (pH7). 0.025% ProClin 300 was added as a preservative.
Concentration	0.23 mg/ml
Storage	Store as concentrated solution. Centrifuge briefly prior to opening vial. For short-term storage (1-2 weeks), store at 4°C. For long-term storage, aliquot and store at -20°C or below. Avoid multiple freeze-thaw cycles.
Note	For research use only.
Isotype	IgG
Clonality	Polyclonal
Purity	Purified by antigen-affinity chromatography.
Uniprot ID	O43474
Entrez	9314
Dilution Range	WB: 1:500-1:3000, FACS: 1:50-1:200, IP: 1:100-1:500



Various whole cell extracts (30 µg) were separated by 10% SDS-PAGE, and the membrane was blotted with KLF4 antibody (GRP475) diluted at 1:5000. The HRP-conjugated anti-rabbit IgG antibody was used to detect the primary antibody.



Sample (20 µg of whole cell lysate) A: mouse ESC 12% SDS PAGE GRP475 diluted at 1:3000. The HRP-conjugated anti-rabbit IgG antibody was used to detect the primary antibody.