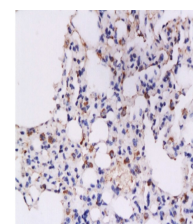


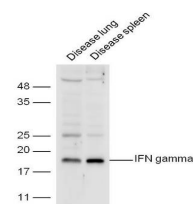
## Product Datasheet

### IFN gamma Polyclonal Antibody GRP247

|                            |  |
|----------------------------|--|
| <b>Description</b>         | Produced by lymphocytes activated by specific antigens or mitogens. IFN-gamma, in addition to having antiviral activity, has important immunoregulatory functions. It is a potent activator of macrophages, it has antiproliferative effects on transformed cells and it can potentiate the antiviral and antitumor effects of the type I interferons. |
| <b>Species/Host</b>        | Rabbit   |
| <b>Reactivity</b>          | Mouse, Rat   |
| <b>Conjugation</b>         | Unconjugated   |
| <b>Tested Applications</b> | IHC-P, WB  |
| <b>Immunogen</b>           | KLH conjugated synthetic peptide derived from mouse IFN gamma (public_immunogen_range: 80-130/155)   |
| <b>Form/Appearance</b>     | Aqueous buffered solution containing 1% BSA, 50% glycerol and 0.09% sodium azide.  |
| <b>Concentration</b>       | 1ug/ul   |
| <b>Storage</b>             | Store at -20°C for 12 months.  |
| <b>Note</b>                | For research use only.   |
| <b>Isotype</b>             | IgG  |
| <b>Clonality</b>           | Polyclonal   |
| <b>Purity</b>              | Purified by Protein A.   |
| <b>Uniprot ID</b>          | <b>P01580</b>  |
| <b>Entrez</b>              | <b>15978</b>   |
| <b>Dilution Range</b>      | WB: 1:300-1000, IHC-P: 1:200-400   |



WB of GRP247



IHC-P of GRP247