

## Product Datasheet

### CD31 Polyclonal Antibody GRP245

#### Description

Induces susceptibility to atherosclerosis (By similarity). Cell adhesion molecule which is required for leukocyte transendothelial migration (TEM) under most inflammatory conditions. Tyr-69 plays a critical role in TEM and is required for efficient trafficking of PECAM1 to and from the lateral border recycling compartment (LBRC) and is also essential for the LBRC membrane to be targeted around migrating leukocytes. Prevents phagocyte ingestion of closely apposed viable cells by transmitting 'detachment' signals, and changes function on apoptosis, promoting tethering of dying cells to phagocytes (the encounter of a viable cell with a phagocyte via the homophilic interaction of PECAM1 on both cell surfaces leads to the viable cell's active repulsion from the phagocyte. During apoptosis, the inside-out signaling of PECAM1 is somehow disabled so that the apoptotic cell does not actively reject the phagocyte anymore. The lack of this repulsion signal together with the interaction of the eat-me signals and their respective receptors causes the attachment of the apoptotic cell to the phagocyte, thus triggering the process of engulfment). Isoform Delta15 is unable to protect against apoptosis. Modulates BDKRB2 activation. Regulates bradykinin- and hyperosmotic shock-induced ERK1/2 activation in human umbilical cord vein cells (HUVEC).

#### Species/Host

Rabbit

#### Reactivity

Human, Mouse, Rat

#### Conjugation

Unconjugated

#### Tested Applications

FC, ICC, IF, IHC-P

#### Immunogen

KLH conjugated synthetic peptide derived from mouse CD31 (public\_immunogen\_range: 621-650/738)

#### Form/Appearance

Aqueous buffered solution containing 1% BSA, 50% glycerol and 0.09% sodium azide.

#### Concentration

1ug/ul

#### Storage

Store at -20°C for 12 months.

#### Note

For research use only.

#### Isotype

IgG

#### Clonality

Polyclonal

#### Purity

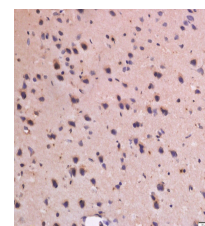
Purified by Protein A.

#### Uniprot ID

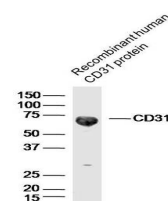
**P16284**

#### Entrez

**5175**



WB of GRP245



IHC-P of GRP245