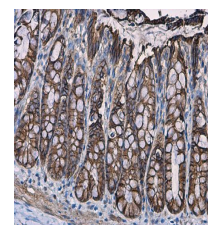


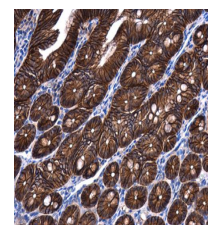
## Product Datasheet

### beta Catenin antibody [N1N2-2], N-term GRP22

<b>Description</b>	Beta-catenin is an adherens junction protein. Adherens junctions (AJs; also called the zonula adherens) are critical for the establishment and maintenance of epithelial layers, such as those lining organ surfaces. AJs mediate adhesion between cells, communicate a signal that neighboring cells are present, and anchor the actin cytoskeleton. In serving these roles, AJs regulate normal cell growth and behavior. At several stages of embryogenesis, wound healing, and tumor cell metastasis, cells form and leave epithelia. This process, which involves the disruption and reestablishment of epithelial cell-cell contacts, may be regulated by the disassembly and assembly of AJs. AJs may also function in the transmission of the 'contact inhibition' signal, which instructs cells to stop dividing once an epithelial sheet is complete.[supplied by OMIM]
<b>Species/Host</b>	Rabbit
<b>Reactivity</b>	Human, Mouse, Rat, Rabbit
<b>Conjugation</b>	Unconjugated
<b>Tested Applications</b>	ChIP, FACS, ICC, IF, IHC-P, IP, WB
<b>Immunogen</b>	Recombinant protein encompassing a sequence within the N-terminus region of human beta Catenin. The exact sequence is proprietary.
<b>Form/Appearance</b>	Liquid: 1XPBS, 1% BSA, 20% Glycerol (pH7). 0.025% ProClin 300 was added as a preservative.
<b>Concentration</b>	0.1 mg/ml
<b>Storage</b>	Store as concentrated solution. Centrifuge briefly prior to opening vial. For short-term storage (1-2 weeks), store at 4°C. For long-term storage, aliquot and store at -20°C or below. Avoid multiple freeze-thaw cycles.
<b>Note</b>	For research use only.
<b>Isotype</b>	IgG
<b>Clonality</b>	Polyclonal
<b>Purity</b>	Purified by antigen-affinity chromatography.
<b>Uniprot ID</b>	<b>P35222</b>
<b>Entrez</b>	<b>1499</b>
<b>Dilution Range</b>	WB: 1:500-1:20000, ICC: 1:100-1:1000, IHC-P: 1:100-1:1000, FACS 1:50-1:200, IP: 1:50-1:100



beta Catenin antibody [N1N2-2], N-term detects beta Catenin protein at cell membrane and cytoplasm in rat colon by immunohistochemical analysis. Sample: Paraffin-embedded rat colon. beta Catenin antibody [N1N2-2], N-term (GRP474) diluted at 1:500.



beta Catenin antibody [N1N2-2], N-term detects beta Catenin protein at cell membrane and cytoplasm in mouse intestine by immunohistochemical analysis. Sample: