

Product Datasheet

MMP2 Polyclonal Antibody GRP236

Description

Ubiquitous metalloproteinase that is involved in diverse functions such as remodeling of the vasculature, angiogenesis, tissue repair, tumor invasion, inflammation, and atherosclerotic plaque rupture. As well as degrading extracellular matrix proteins, can also act on several nonmatrix proteins such as big endothelial 1 and beta-type CGRP promoting vasoconstriction. Also cleaves KISS at a Gly-I-Leu bond. Appears to have a role in myocardial cell death pathways. Contributes to myocardial oxidative stress by regulating the activity of GSK3beta. Cleaves GSK3beta in vitro. Involved in the formation of the fibrovascular tissues in association with MMP14. PEX, the C-terminal non-catalytic fragment of MMP2, possesses anti-angiogenic and anti-tumor properties and inhibits cell migration and cell adhesion to FGF2 and vitronectin. Ligand for integrin α 5 β 3 on the surface of blood vessels. Isoform 2: Mediates the proteolysis of CHUK/IKK α and initiates a primary innate immune response by inducing mitochondrial-nuclear stress signaling with activation of the pro-inflammatory NF-kappaB, NFAT and IRF transcriptional pathways.

Species/Host

Rabbit

Reactivity

Human, Mouse, Rat

Conjugation

Unconjugated

Tested Applications

FC, IHC-P, WB

Immunogen

MAT conjugated synthetic peptide derived from human MMP2 (public_immunogen_range: 20-70/476)

Form/Appearance

Aqueous buffered solution containing 1% BSA, 50% glycerol and 0.09% sodium azide.

Concentration

1 μ g/ μ l

Storage

Store at -20°C for 12 months.

Note

For research use only.

Isotype

IgG

Clonality

Polyclonal

Purity

Purified by Protein A.

Uniprot ID

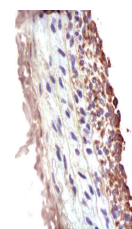
P08253

Entrez

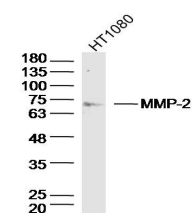
4313

Dilution Range

WB: 1:300-1000, FC: 1:20-100, IHC-P: 1:500-1000



WB of GRP236



IHC-P of GRP236