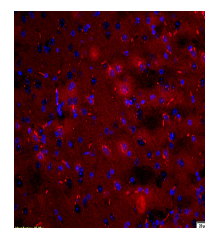


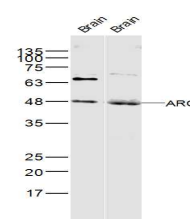
Product Datasheet

ARC/Arg3.1 Polyclonal Antibody GRP233

Description	Required for consolidation of synaptic plasticity as well as formation of long-term memory. Regulates endocytosis of AMPA receptors in response to synaptic activity. Required for homeostatic synaptic scaling of AMPA receptors (By similarity). Plays a role in the regulation of cell morphology and cytoskeletal organization. Required in the stress fiber dynamics and cell migration.
Species/Host	Rabbit
Reactivity	Human, Mouse, Rat
Conjugation	Unconjugated
Tested Applications	FC, IHC-P, WB
Immunogen	KLH conjugated synthetic peptide derived from human ARC (public_immunogen_range: 100-150/396)
Form/Appearance	Aqueous buffered solution containing 1% BSA, 50% glycerol and 0.09% sodium azide.
Concentration	1µg/ul
Storage	Store at -20°C for 12 months.
Note	For research use only.
Isotype	IgG
Clonality	Polyclonal
Purity	Purified by Protein A.
Uniprot ID	Q7LC44
Entrez	23237
Dilution Range	WB: 1:300-1000, FC: 1:20-100, IHC-P: 1:200-400



WB of GRP233



IHC-P of GRP233