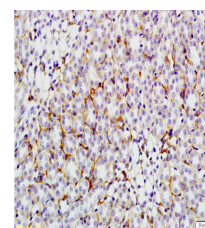


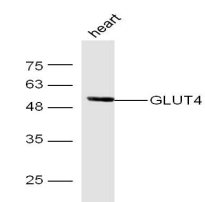
Product Datasheet

GLUT4 Polyclonal Antibody GRP232

Description	GLUT4 is the facilitated glucose transporter expressed exclusively in adipocytes and muscle cells, and is also known as the "insulin-responsive" glucose transporter. GLUT4 translocates from an ill-defined intracellular compartment to the plasma membrane in response to insulin. The total cellular content of GLUT4 is significantly decreased in adipose cells from many patients with Type II diabetes mellitus, and animals with some types of experimental diabetes.
Species/Host	Rabbit
Reactivity	Human, Mouse, Rat
Conjugation	Unconjugated
Tested Applications	FC, IHC-P, WB
Immunogen	KLH conjugated synthetic peptide derived from human GLUT4 (public_immunogen_range: 467-509/509)
Form/Appearance	Aqueous buffered solution containing 1% BSA, 50% glycerol and 0.09% sodium azide.
Concentration	1ug/ul
Storage	Store at -20°C for 12 months.
Note	For research use only.
Isotype	IgG
Clonality	Polyclonal
Purity	Purified by Protein A.
Uniprot ID	P14672
Entrez	6517
Dilution Range	WB: 1:300-1000, FC: 1:20-100, IHC-P: 1:200-400



WB of GRP232



IHC-P of GRP232