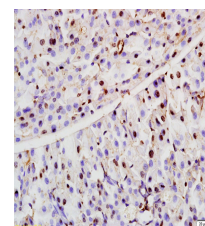


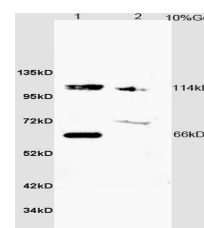
Product Datasheet

ZCWCC1 Polyclonal Antibody GRP230

Description	Exhibits a cytosolic function in lipogenesis, adipogenic differentiation, and lipid homeostasis by increasing the activity of ACLY, possibly preventing its dephosphorylation. May act as a transcriptional repressor. Down-regulates CA9 expression.
Species/Host	Rabbit
Reactivity	Human, Mouse, Rat
Conjugation	Unconjugated
Tested Applications	IHC-P, WB
Immunogen	KLH conjugated synthetic peptide derived from human ZCWCC1 (public_immunogen_range: 940-990/1032)
Form/Appearance	Aqueous buffered solution containing 1% BSA, 50% glycerol and 0.09% sodium azide.
Concentration	1ug/ul
Storage	Store at -20°C for 12 months.
Note	For research use only.
Isotype	IgG
Clonality	Polyclonal
Purity	Purified by Protein A.
Uniprot ID	Q9Y6X9
Entrez	22880
Dilution Range	WB: 1:300-1000, IHC-P: 1:200-400



WB of GRP230



IHC-P of GRP230