

Product Datasheet

BCL6 antibody [N2C1], Internal GRP20

Description

The protein encoded by this gene is a zinc finger transcription factor and contains an N-terminal POZ domain. This protein acts as a sequence-specific repressor of transcription, and has been shown to modulate the transcription of START-dependent IL-4 responses of B cells. This protein can interact with a variety of POZ-containing proteins that function as transcription corepressors. This gene is found to be frequently translocated and hypermutated in diffuse large-cell lymphoma (DLCL), and may be involved in the pathogenesis of DLCL. Alternatively spliced transcript variants encoding different protein isoforms have been found for this gene. [provided by RefSeq]

Species/Host

Rabbit

Reactivity

Human, Mouse, Rat

Conjugation

Unconjugated

Tested Applications

ChIP, IHC-Fr, IHC-P, IP, WB

Immunogen

Recombinant protein encompassing a sequence within the center region of human BCL6. The exact sequence is proprietary.

Form/Appearance

Liquid: 1XPBS, 20% Glycerol (pH7). 0.025% ProClin 300 was added as a preservative.

Concentration

1.78 mg/ml

Storage

Store as concentrated solution. Centrifuge briefly prior to opening. For short-term storage (1-2 weeks), store at 4°C. For long-term storage, aliquot and store at -20°C or below. Avoid multiple freeze-thaw cycles.

Note

For research use only.

Isotype

IgG

Clonality

Polyclonal

Purity

Purified by antigen-affinity chromatography.

Uniprot ID

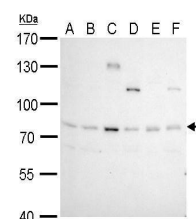
P41182

Entrez

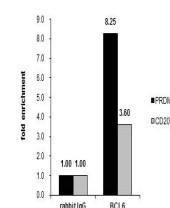
604

Dilution Range

WB: 1:500-1:3000, IHC-P: 1:100-1:1000, IHC-Fr: 1:100-1:1000, IP: 1:100-1:500



BCL6 antibody [N2C1], Internal detects BCL6 protein by western blot analysis. A. 30 ?g Neuro2A whole cell lysate/extract B. 30 ?g GL261 whole cell lysate/extract C. 30 ?g C8D30 whole cell lysate/extract D. 30 ?g NIH-3T3 whole cell lysate/extract



Cross-linked ChIP was performed with Raji chromatin extract and 5 ?g of either control rabbit IgG or anti-BCL6 antibody. The precipitated DNA was detected by PCR with primer set targeting to PRDM1 or CD20.