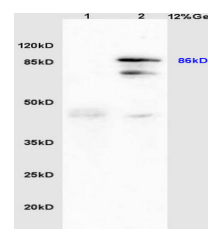


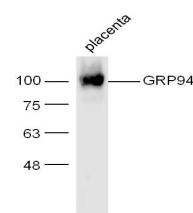
Product Datasheet

GRP94 Polyclonal Antibody GRP217

Description	Molecular chaperone that functions in the processing and transport of secreted proteins. When associated with CNPY3, required for proper folding of Toll-like receptors (By similarity). Functions in endoplasmic reticulum associated degradation (ERAD). Has ATPase activity.
Species/Host	Rabbit
Reactivity	Human, Mouse, Rat
Conjugation	Unconjugated
Tested Applications	IHC-P, WB
Immunogen	KLH conjugated synthetic peptide derived from human GRP94 (public_immunogen_range: 550-600/803)
Form/Appearance	Aqueous buffered solution containing 1% BSA, 50% glycerol and 0.09% sodium azide.
Concentration	1ug/ul
Storage	Store at -20°C for 12 months.
Note	For research use only.
Isotype	IgG
Clonality	Polyclonal
Purity	Purified by Protein A.
Uniprot ID	P14625
Entrez	7184
Dilution Range	WB: 1:300-1000, IHC-P: 1:200-400



WB of GRP217



IHC-P of GRP217