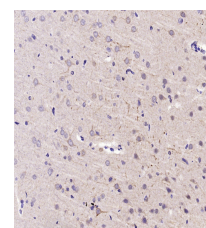


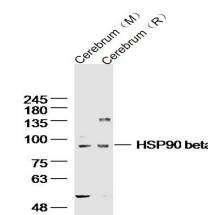
## Product Datasheet

### HSP90 beta Polyclonal Antibody GRP205

<b>Description</b>	Molecular chaperone that promotes the maturation, structural maintenance and proper regulation of specific target proteins involved for instance in cell cycle control and signal transduction. Undergoes a functional cycle that is linked to its ATPase activity. This cycle probably induces conformational changes in the client proteins, thereby causing their activation. Interacts dynamically with various co-chaperones that modulate its substrate recognition, ATPase cycle and chaperone function.
<b>Species/Host</b>	Rabbit
<b>Reactivity</b>	Human, Mouse, Rat
<b>Conjugation</b>	Unconjugated
<b>Tested Applications</b>	FC, IHC-P, WB
<b>Immunogen</b>	KLH conjugated synthetic peptide derived from human HSP90 beta (public_immunogen_range: 640-690/724)
<b>Form/Appearance</b>	Aqueous buffered solution containing 1% BSA, 50% glycerol and 0.09% sodium azide.
<b>Concentration</b>	1ug/ul
<b>Storage</b>	Store at -20°C for 12 months.
<b>Note</b>	For research use only.
<b>Isotype</b>	IgG
<b>Clonality</b>	Polyclonal
<b>Purity</b>	Purified by Protein A.
<b>Uniprot ID</b>	<b>P08238</b>
<b>Entrez</b>	<b>3326</b>
<b>Dilution Range</b>	WB: 1:300-1000, FC: 1:20-100, IHC-P: 1:200-400



WB of GRP205



IHC-P of GRP205