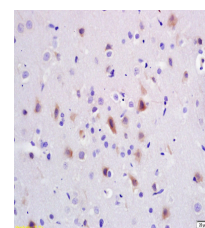


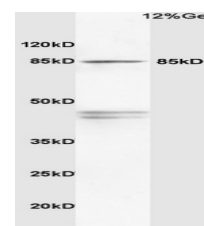
Product Datasheet

PI3 kinase p85 alpha subunit Antibody GRP204

Description	Binds to activated (phosphorylated) protein-Tyr kinases, through its SH2 domain, and acts as an adapter, mediating the association of the p11 catalytic unit to the plasma membrane. Necessary for the insulin-stimulated increase in glucose uptake and glycogen synthesis in insulin-sensitive tissues. Plays an important role in signaling in response to FGFR1, FGFR2, FGFR3, FGFR4, KITLG/SCF, KIT, PDGFRA and PDGFRB. Likewise, plays a role in ITGB2 signaling.
Species/Host	Rabbit
Reactivity	Human, Mouse, Rat
Conjugation	Unconjugated
Tested Applications	FC, ICC, IF, IHC-P, WB
Immunogen	KLH conjugated synthetic peptide derived from human PI3 kinase p85 subunit alpha (public_immunogen_range: 530-580/724)
Form/Appearance	Aqueous buffered solution containing 1% BSA, 50% glycerol and 0.09% sodium azide.
Concentration	1ug/ul
Storage	Store at -20°C for 12 months.
Note	For research use only.
Isotype	IgG
Clonality	Polyclonal
Purity	Purified by Protein A.
Uniprot ID	P27986
Entrez	5295
Dilution Range	WB: 1:300-1000, FC: 1:20-100, IHC-P: 1:200-400, IF: 1:50-200



WB of GRP204



IHC-P of GRP204