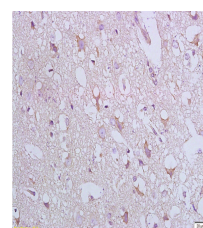


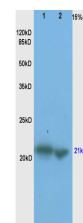
Product Datasheet

Bax Polyclonal Antibody GRP203

Description	Accelerates programmed cell death by binding to, and antagonizing the apoptosis repressor BCL2 or its adenovirus homolog E1B 19k protein. Under stress conditions, undergoes a conformation change that causes translocation to the mitochondrion membrane, leading to the release of cytochrome c that then triggers apoptosis. Promotes activation of CASP3, and thereby apoptosis.
Species/Host	Rabbit
Reactivity	Human, Mouse, Rat, Pig, Rabbit
Conjugation	Unconjugated
Tested Applications	FC, ICC, IF, IHC-P, WB
Immunogen	KLH conjugated synthetic peptide derived from human Bax (public_immunogen_range: 60-110/192)
Form/Appearance	Aqueous buffered solution containing 1% BSA, 50% glycerol and 0.09% sodium azide.
Concentration	1ug/ul
Storage	Store at -20°C for 12 months.
Note	For research use only.
Isotype	IgG
Clonality	Polyclonal
Purity	Purified by Protein A.
Uniprot ID	Q07812
Entrez	581
Dilution Range	WB: 1:300-1000, FC: 1:20-100, IHC-P: 1:200-400, IF: 1:50-200



WB of GRP203



IHC-P of GRP203