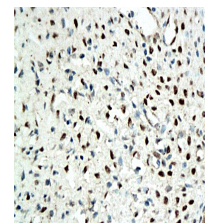


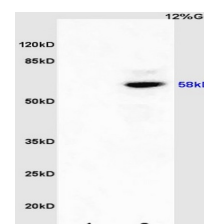
## Product Datasheet

### Estrogen receptor beta Antibody GRP198

<b>Description</b>	Nuclear hormone receptor. Binds estrogens with an affinity similar to that of ESR1, and activates expression of reporter genes containing estrogen response elements (ERE) in an estrogen-dependent manner. Isoform beta-cx lacks ligand binding ability and has no or only very low ere binding activity resulting in the loss of ligand-dependent transactivation ability. DNA-binding by ESR1 and ESR2 is rapidly lost at 37 degrees Celsius in the absence of ligand while in the presence of 17 beta-estradiol and 4-hydroxy-tamoxifen loss in DNA-binding at elevated temperature is more gradual.
<b>Species/Host</b>	Rabbit
<b>Reactivity</b>	Human, Mouse, Rat
<b>Conjugation</b>	Unconjugated
<b>Tested Applications</b>	FC, IHC-P, WB
<b>Immunogen</b>	KLH conjugated synthetic peptide derived from human ER-beta (public_immunogen_range: 220-270/530)
<b>Form/Appearance</b>	Aqueous buffered solution containing 1% BSA, 50% glycerol and 0.09% sodium azide.
<b>Concentration</b>	1ug/ul
<b>Storage</b>	Store at -20°C for 12 months.
<b>Note</b>	For research use only.
<b>Isotype</b>	IgG
<b>Clonality</b>	Polyclonal
<b>Purity</b>	Purified by Protein A.
<b>Uniprot ID</b>	<a href="#">Q92731</a>
<b>Entrez</b>	<a href="#">2100</a>
<b>Dilution Range</b>	WB: 1:300-1000, FC: 1:20-100, IHC-P: 1:200-400



WB of GRP198



IHC-P of GRP198