

Product Datasheet

Von Hippel Lindau antibody GRP18

Description

Von Hippel-Lindau syndrome (VHL) is a dominantly inherited familial cancer syndrome predisposing to a variety of malignant and benign tumors. A germline mutation of this gene is the basis of familial inheritance of VHL syndrome. The protein encoded by this gene is a component of the protein complex that includes elongin B, elongin C, and cullin-2, and possesses ubiquitin ligase E3 activity. This protein is involved in the ubiquitination and degradation of hypoxia-inducible-factor (HIF), which is a transcription factor that plays a central role in the regulation of gene expression by oxygen. RNA polymerase II subunit POLR2G/RPB7 is also reported to be a target of this protein. Alternatively spliced transcript variants encoding distinct isoforms have been observed. [provided by RefSeq]

Species/Host

Rabbit

Reactivity

Human, Mouse

Conjugation

Unconjugated

Tested Applications

ICC, IF, IHC-P, IP, WB

Immunogen

Recombinant protein encompassing a sequence within the center region of Human Von Hippel Lindau. The exact sequence is proprietary.

Form/Appearance

Liquid: 1XPBS, 20% Glycerol (pH7). 0.025% ProClin 300 was added as a preservative.

Concentration

0.93 mg/ml

Storage

Store as concentrated solution. Centrifuge briefly prior to opening vial. For short-term storage (1-2 weeks), store at 4°C. For long-term storage, aliquot and store at -20°C or below. Avoid multiple freeze-thaw cycles.

Note

For research use only.

Isotype

IgG

Clonality

Polyclonal

Purity

Purified by antigen-affinity chromatography.

Uniprot ID

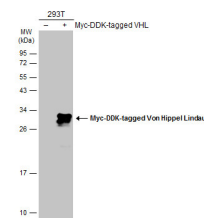
P40337

Entrez

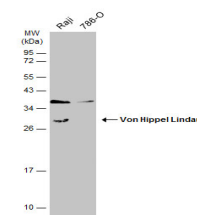
7428

Dilution Range

WB: 1:500-1:10000, ICC: 1:100-1:1000, IHC-P: 1:100-1:1000



Non-transfected (â€“) and transfected (+) 293T whole cell extracts (30 µg) were separated by 12% SDS-PAGE, and the membrane was blotted with Von Hippel Lindau antibody (GRP470) diluted at 1:5000. The HRP-conjugated anti-rabbit IgG antibody was used to



Various whole cell extracts (30 µg) were separated by 12% SDS-PAGE, and the membrane was blotted with Von Hippel Lindau antibody (GRP470) diluted at 1:1000. The HRP-conjugated anti-rabbit IgG antibody was used to detect