

## Product Datasheet

### P53 protein(wt-p53) Polyclonal Antibody GRP186

#### Description

Acts as a tumor suppressor in many tumor types; induces growth arrest or apoptosis depending on the physiological circumstances and cell type. Involved in cell cycle regulation as a trans-activator that acts to negatively regulate cell division by controlling a set of genes required for this process. One of the activated genes is an inhibitor of cyclin-dependent kinases. Apoptosis induction seems to be mediated either by stimulation of BAX and FAS antigen expression, or by repression of Bcl-2 expression. In cooperation with mitochondrial PPIF is involved in activating oxidative stress-induced necrosis; the function is largely independent of transcription. Induces the transcription of long intergenic non-coding RNA p21 (lincRNA-p21) and lincRNA-Mkn1. LincRNA-p21 participates in TP53-dependent transcriptional repression leading to apoptosis and seem to have to effect on cell-cycle regulation. Implicated in Notch signaling cross-over. Prevents CDK7 kinase activity when associated to CAK complex in response to DNA damage, thus stopping cell cycle progression. Isoform 2 enhances the transactivation activity of isoform 1 from some but not all TP53-inducible promoters. Isoform 4 suppresses transactivation activity and impairs growth suppression mediated by isoform 1. Isoform 7 inhibits isoform 1-mediated apoptosis.

#### Species/Host

Rabbit

#### Reactivity

Human, Mouse, Rat

#### Conjugation

Unconjugated

#### Tested Applications

ICC, IF, IHC-P, WB

#### Immunogen

KLH conjugated synthetic peptide derived from human P53 (public\_immunogen\_range: 240-290/393)

#### Form/Appearance

Aqueous buffered solution containing 1% BSA, 50% glycerol and 0.09% sodium azide.

#### Concentration

1ug/ul

#### Storage

Store at -20°C for 12 months.

#### Note

For research use only.

#### Isotype

IgG

#### Clonality

Polyclonal

#### Purity

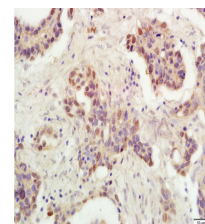
Purified by Protein A.

#### Uniprot ID

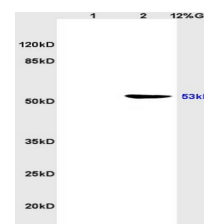
**P04637**

#### Entrez

**7157**



WB of GRP186



IHC-P of GRP186