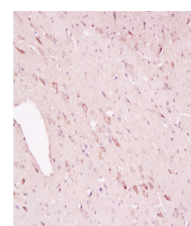


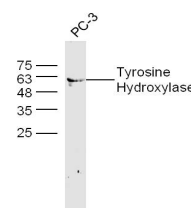
Product Datasheet

Tyrosine Hydroxylase Polyclonal Antibody GRP180

| | |
|----------------------------|---|
| Description | Neuronal Marker Tyrosine hydroxylase is involved in the conversion of tyrosine to dopamine. As the rate-limiting enzyme in the synthesis of catecholamines, tyrosine hydroxylase has a key role in the physiology of adrenergic neurons. Tyrosine hydroxylase is regularly used as a marker for dopaminergic neurons, which is particularly relevant for research into Parkinson's disease. |
| Species/Host | Rabbit |
| Reactivity | Human, Mouse, Rat |
| Conjugation | Unconjugated |
| Tested Applications | FC, IHC-P, WB |
| Immunogen | KLH conjugated synthetic peptide derived from human Tyrosine Hydroxylase (public_immunogen_range: 115-160/528) |
| Form/Appearance | Aqueous buffered solution containing 1% BSA, 50% glycerol and 0.09% sodium azide. |
| Concentration | 1ug/ul |
| Storage | Store at -20°C for 12 months. |
| Note | For research use only. |
| Isotype | IgG |
| Clonality | Polyclonal |
| Purity | Purified by Protein A. |
| Uniprot ID | P07101 |
| Entrez | 7054 |
| Dilution Range | WB: 1:300-1000, FC: 1:20-100, IHC-P: 1:200-400 |



WB of GRP180



IHC-P of GRP180