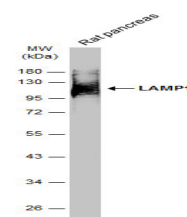


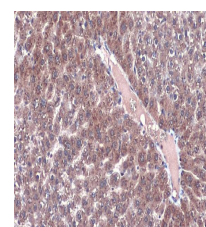
## Product Datasheet

### LAMP1 antibody [GT25212] GRP176

<b>Description</b>	The protein encoded by this gene is a member of a family of membrane glycoproteins. This glycoprotein provides selectins with carbohydrate ligands. It may also play a role in tumor cell metastasis. [provided by RefSeq]
<b>Species/Host</b>	Mouse
<b>Reactivity</b>	Human, Mouse, Rat
<b>Conjugation</b>	Unconjugated
<b>Tested Applications</b>	ICC, IF, IHC-P, WB
<b>Immunogen</b>	Recombinant protein encompassing a sequence within the center region of human LAMP1. The exact sequence is proprietary.
<b>Form/Appearance</b>	Liquid: PBS
<b>Concentration</b>	1 mg/ml
<b>Storage</b>	Store as concentrated solution. Centrifuge briefly prior to opening vial. For short-term storage (1-2 weeks), store at 4°C. For long-term storage, aliquot and store at -20°C or below. Avoid multiple freeze-thaw cycles.
<b>Note</b>	For research use only.
<b>Isotype</b>	IgG2b
<b>Clonality</b>	Monoclonal
<b>Purity</b>	Affinity purified by Protein A.
<b>Clone ID</b>	GT25212
<b>Uniprot ID</b>	<b>P11279</b>
<b>Entrez</b>	<b>3916</b>
<b>Dilution Range</b>	WB: 1:500-1:3000, ICC: 1:100-1:1000, IHC-P: 1:100-1:1000



Rat tissue extract (50 µg) was separated by 10% SDS-PAGE, and the membrane was blotted with LAMP1 antibody [GT25212] (GRP628) diluted at 1:1000. The HRP-conjugated anti-mouse IgG antibody was used to detect the primary antibody, and the signal was developed.



LAMP1 antibody [GT25212] detects LAMP1 protein in cytoplasm by immunohistochemical analysis. Sample: Paraffin-embedded mouse liver. LAMP1 stained by LAMP1 antibody [GT25212] (GRP628) diluted at 1:1000. Antigen Retrieval: Citrate buffer, pH 6.0, 15 min