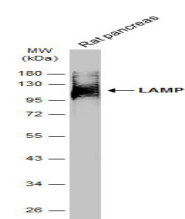


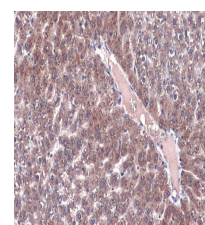
Product Datasheet

LAMP1 antibody [GT25212] GRP176

Description	The protein encoded by this gene is a member of a family of membrane glycoproteins. This glycoprotein provides selectins with carbohydrate ligands. It may also play a role in tumor cell metastasis. [provided by RefSeq]
Species/Host	Mouse
Reactivity	Human, Mouse, Rat
Conjugation	Unconjugated
Tested Applications	ICC, IF, IHC-P, WB
Immunogen	Recombinant protein encompassing a sequence within the cente region of human LAMP1. The exact sequence is proprietary.
Form/Appearance	Liquid: PBS
Concentration	1 mg/ml
Storage	Store as concentrated solution. Centrifuge briefly prior to opening vial. For short-term storage (1-2 weeks), store at 4°C. For long-term storage, aliquot and store at -20°C or below. Avoid multiple freeze-thaw cycles.
Note	For research use only.
Isotype	IgG2b
Clonality	Monoclonal
Purity	Affinity purified by Protein A.
Clone ID	GT25212
Uniprot ID	P11279
Entrez	3916
Dilution Range	WB: 1:500-1:3000, ICC: 1:100-1:1000, IHC-P: 1:100-1:1000



Rat tissue extract (50 µg) was separated by 10% SDS-PAGE, and the membrane was blotted with LAMP1 antibody [GT25212] (GRP628) diluted at 1:1000. The HRP-conjugated anti-mouse IgG antibody was used to detect the primary antibody, and the signal was dev



LAMP1 antibody [GT25212] detects LAMP1 protein at cytoplasm by immunohistochemical analysis. Sample: Paraffin-embedded mouse liver. LAMP1 stained by LAMP1 antibody [GT25212] (GRP628) diluted at 1:1000. Antigen Retrieval: Citrate buffer, pH 6.0, 15 min