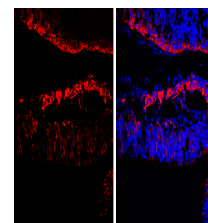


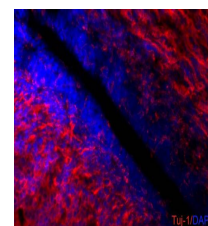
Product Datasheet

beta Tubulin 3/ Tuj1 antibody [GT11710] GRP174

Description	This gene encodes a class III member of the beta tubulin protein family. Beta tubulins are one of two core protein families (alpha and beta tubulins) that heterodimerize and assemble to form microtubules. This protein is primarily expressed in neurons and may be involved in neurogenesis and axon guidance and maintenance. Mutations in this gene are the cause of congenital fibrosis of the extraocular muscles type 3. Alternate splicing results in multiple transcript variants. A pseudogene of this gene is found on chromosome 6. [provided by RefSeq]
Species/Host	Mouse
Reactivity	Human, Mouse, Rat
Conjugation	Unconjugated
Tested Applications	ICC, IF, IHC-Fr, IHC-P, IP, WB
Immunogen	Carrier-protein conjugated synthetic peptide encompassing a sequence within the C-terminus region of Human beta Tubulin 3/ Tuj1. The exact sequence is proprietary.
Form/Appearance	Liquid: PBS
Concentration	1 mg/ml
Storage	Store as concentrated solution. Centrifuge briefly prior to opening vial. For short-term storage (1-2 weeks), store at 4°C. For long-term storage, aliquot and store at -20°C or below. Avoid multiple freeze-thaw cycles.
Note	For research use only.
Isotype	IgG2b
Clonality	Monoclonal
Purity	Affinity purified by Protein A.
Clone ID	GT11710
Uniprot ID	Q13509
Entrez	10381
Dilution Range	WB: 1:500-1:20000, ICC: 1:100-1:1000, IHC-P: 1:100-1:1000, IHC-Fr: 1:100-1:1000, IP: 1:100-1:500



beta Tubulin 3/ Tuj1 antibody [GT11710] detects beta Tubulin 3/ Tuj1 protein by immunohistochemical analysis. Sample: Frozen sectioned E13.5 rat brain. Red: beta Tubulin 3/ Tuj1 protein stained by beta Tubulin 3/ Tuj1 antibody [GT11710] (GRP626) diluted at 1:500.



beta III Tubulin antibody [GT11710] detects beta III Tubulin proteins on embryonic mouse brain by immunohistochemical analysis. Sample: Frozen section of embryonic mouse brain (mE18.5). Red: beta III Tubulin antibody [GT11710] (GRP626) diluted at 1:500. BI