

Product Datasheet

Glutamine synthetase antibody [GT1055] GRP173

Description

Glutamine is a main source of energy and is involved in cell proliferation, inhibition of apoptosis, and cell signaling (Haberle et al., 2005 [PubMed 16267323]). Fetal glutamine requirements are very high and depend largely on active glutamine synthesis and the release of glutamine into the fetal circulation by the placenta. Glutamine synthetase (EC 6.3.1.2), also called glutamate-ammonia ligase (GLUL), is expressed throughout the body and plays an important role in controlling body pH and in removing ammonia from the circulation. The enzyme clears L-glutamate, the major neurotransmitter in the central nervous system, from neuronal synapses (see references in Clancy et al., 1996 [PubMed 8975719]).[supplied by OMIM]

Species/Host

Mouse

Reactivity

Human, Mouse, Rat

Conjugation

Unconjugated

Tested Applications

ICC, IF, IHC-Fr, IHC-P, WB

Immunogen

Full length human Glutamine synthetase Recombinant protein.

Form/Appearance

Liquid: PBS

Concentration

1 mg/ml

Storage

Store as concentrated solution. Centrifuge briefly prior to opening vial. For short-term storage (1-2 weeks), store at 4°C. For long-term storage, aliquot and store at -20°C or below. Avoid multiple freeze-thaw cycles.

Note

For research use only.

Isotype

IgG1

Clonality

Monoclonal

Purity

Affinity purified by Protein G.

Clone ID

GT1055

Uniprot ID

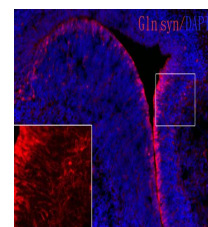
P15104

Entrez

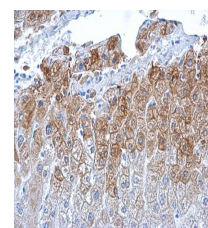
2752

Dilution Range

WB: 1:500-1:3000, ICC: 1:100-1:1000, IHC-P: 1:100-1:1000, IHC-Fr: 1:100-1:1000



Glutamine synthetase antibody [GT1055] detects Glutamine synthetase protein on embryonic mouse brain by immunohistochemical analysis.
Sample: Frozen section of embryonic mouse brain (mE18.5). Red: Glutamine synthetase antibody [GT1055] (GRP625) diluted at



Glutamine synthetase antibody [GT1055] detects Glutamine synthetase protein at cytosol on human hepatoma by immunohistochemical analysis.
Sample: Paraffin-embedded human hepatoma. Glutamine