

## Product Datasheet

### TDP43 antibody [GT225] GRP172

#### Description

HIV-1, the causative agent of acquired immunodeficiency syndrome (AIDS), contains an RNA genome that produces a chromosomally integrated DNA during the replicative cycle. Activation of HIV-1 gene expression by the transactivator Tat is dependent on an RNA regulatory element (TAR) located downstream of the transcription initiation site. The protein encoded by this gene is a transcriptional repressor that binds to chromosomally integrated TAR DNA and represses HIV-1 transcription. In addition, this protein regulates alternate splicing of the CFTR gene. A similar pseudogene is present on chromosome 20. [provided by RefSeq]

#### Species/Host

Mouse

#### Reactivity

Human, Mouse, Rat

#### Conjugation

Unconjugated

#### Tested Applications

ICC, IF, IHC-P, WB

#### Immunogen

Recombinant protein encompassing a sequence within the center region of human TDP43. The exact sequence is proprietary.

#### Form/Appearance

Liquid: PBS

#### Concentration

1 mg/ml

#### Storage

Store as concentrated solution. Centrifuge briefly prior to opening. For short-term storage (1-2 weeks), store at 4°C. For long-term storage, aliquot and store at -20°C or below. Avoid multiple freeze-thaw cycles.

#### Note

For research use only.

#### Isotype

IgG2b

#### Clonality

Monoclonal

#### Purity

Affinity purified by Protein G.

#### Clone ID

GT225

#### Uniprot ID

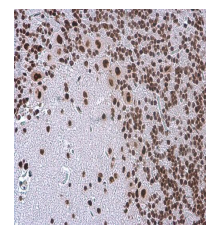
**Q13148**

#### Entrez

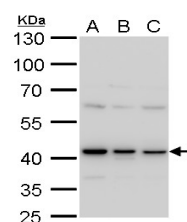
**23435**

#### Dilution Range

WB: 1:500-1:3000, ICC: 1:100-1:1000, IHC-P: 1:100-1:1000



TDP43 antibody [GT225] detects TDP43 protein at nucleus in rat brain by immunohistochemical analysis. Sample: Paraffin-embedded rat brain. TDP43 antibody [GT225] (GRP624) diluted at 1:200.



TARDP antibody [GT225] detects TARDP protein by western blot analysis. A. 30 µg 293T whole cell lysate/extract B. 30 µg A431 whole cell lysate/extract C. 30 µg HeLa whole cell lysate/extract 10 % SDS-PAGE TARDP antibody [GT225] (GRP624) dilution: