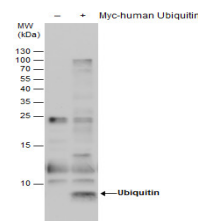


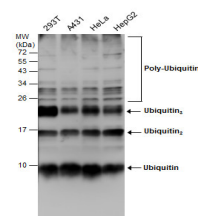
Product Datasheet

Ubiquitin antibody [GT7811] GRP171

Description	Ubiquitin antibody [GT7811]
Species/Host	Mouse
Reactivity	Human, Mouse, Rat
Conjugation	Unconjugated
Tested Applications	IHC-P, WB
Immunogen	The immunogen used to generate this antibody corresponds to Ubiquitin.
Form/Appearance	Liquid: PBS
Concentration	1 mg/ml
Storage	Store as concentrated solution. Centrifuge briefly prior to opening vial. For short-term storage (1-2 weeks), store at 4°C. For long-term storage, aliquot and store at -20°C or below. Avoid multiple freeze-thaw cycles.
Note	For research use only.
Isotype	IgG2b
Clonality	Monoclonal
Purity	Affinity purified by Protein G.
Clone ID	GT7811
Dilution Range	WB: 1:5000-1:20000, IHC-P: 1:100-1:1000



Ubiquitin antibody detects Ubiquitin protein by western blot analysis. Non-transfected (-) and -transfected (+, including Myc-tag) 293T whole cell extracts (30 µg) were separated by 15% SDS-PAGE, and the membrane was blotted with Ubiquitin antibody (GRP62).



Various whole cell extracts (30 µg) were separated by 15% SDS-PAGE, and the membrane was blotted with Ubiquitin antibody [GT7811] (GRP623) diluted at 1:5000.