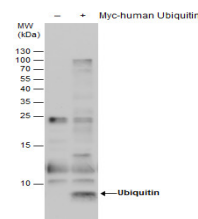


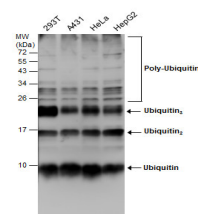
## Product Datasheet

### Ubiquitin antibody [GT7811] GRP171

<b>Description</b>	Ubiquitin antibody [GT7811]
<b>Species/Host</b>	Mouse
<b>Reactivity</b>	Human, Mouse, Rat
<b>Conjugation</b>	Unconjugated
<b>Tested Applications</b>	IHC-P, WB
<b>Immunogen</b>	The immunogen used to generate this antibody corresponds to Ubiquitin.
<b>Form/Appearance</b>	Liquid: PBS
<b>Concentration</b>	1 mg/ml
<b>Storage</b>	Store as concentrated solution. Centrifuge briefly prior to opening vial. For short-term storage (1-2 weeks), store at 4°C. For long-term storage, aliquot and store at -20°C or below. Avoid multiple freeze-thaw cycles.
<b>Note</b>	For research use only.
<b>Isotype</b>	IgG2b
<b>Clonality</b>	Monoclonal
<b>Purity</b>	Affinity purified by Protein G.
<b>Clone ID</b>	GT7811
<b>Dilution Range</b>	WB: 1:5000-1:20000, IHC-P: 1:100-1:1000



Ubiquitin antibody detects Ubiquitin protein by western blot analysis. Non-transfected (-) and -transfected (+, including Myc-tag) 293T whole cell extracts (30 µg) were separated by 15% SDS-PAGE, and the membrane was blotted with Ubiquitin antibody (GRP62).



Various whole cell extracts (30 µg) were separated by 15% SDS-PAGE, and the membrane was blotted with Ubiquitin antibody [GT7811] (GRP623) diluted at 1:5000.