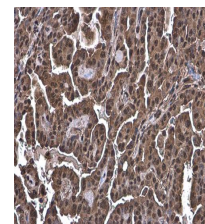


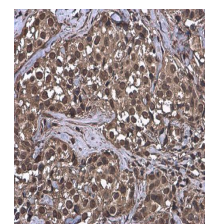
Product Datasheet

Ubiquitin antibody [GT751] GRP170

Description	Ubiquitin antibody [GT751]
Species/Host	Mouse
Reactivity	Human, Mouse, Rat
Conjugation	Unconjugated
Tested Applications	IHC-P, WB
Immunogen	The immunogen used to generate this antibody corresponds to Ubiquitin.
Form/Appearance	Liquid: PBS
Concentration	1 mg/ml
Storage	Store as concentrated solution. Centrifuge briefly prior to opening vial. For short-term storage (1-2 weeks), store at 4°C. For long-term storage, aliquot and store at -20°C or below. Avoid multiple freeze-thaw cycles.
Note	For research use only.
Isotype	IgG2a
Clonality	Monoclonal
Purity	Affinity purified by Protein G.
Clone ID	GT751
Dilution Range	WB: 1:500-1:20000, IHC-P: 1:100-1:1000



Ubiquitin antibody [GT751] detects Ubiquitin protein at cytoplasm and nucleus by immunohistochemical analysis. Sample: Paraffin-embedded human endometrial carcinoma. Ubiquitin stained by Ubiquitin antibody [GT751] (GRP622) diluted at 1:200.



Ubiquitin antibody [GT751] detects Ubiquitin protein at cytoplasm and nucleus by immunohistochemical analysis. Sample: Paraffin-embedded human breast carcinoma. Ubiquitin stained by Ubiquitin antibody [GT751] (GRP622) diluted at 1:200.