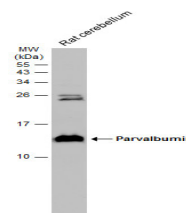


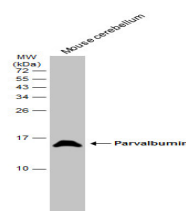
Product Datasheet

Parvalbumin antibody GRP169

Description	In muscle, parvalbumin is thought to be involved in relaxation after contraction. It binds two calcium ions.
Species/Host	Rabbit
Reactivity	Mouse, Rat
Conjugation	Unconjugated
Tested Applications	IHC-Fr, WB
Immunogen	Recombinant protein encompassing a sequence within the center region of Mouse Parvalbumin. The exact sequence is proprietary.
Form/Appearance	Liquid: 1XPBS, 20% Glycerol (pH7). 0.025% ProClin 300 was added as a preservative.
Concentration	0.71 mg/ml
Storage	Store as concentrated solution. Centrifuge briefly prior to opening vial. For short-term storage (1-2 weeks), store at 4°C. For long-term storage, aliquot and store at -20°C or below. Avoid multiple freeze-thaw cycles.
Note	For research use only.
Isotype	IgG
Clonality	Polyclonal
Purity	Purified by antigen-affinity chromatography.
Uniprot ID	P32848
Entrez	19293
Dilution Range	WB: 1:5000-1:20000, IHC-Fr: 1:100-1:1000



Rat tissue extract (50 µg) was separated by 15% SDS-PAGE, and the membrane was blotted with Parvalbumin antibody (GRP621) diluted at 1:10000. The HRP-conjugated anti-rabbit IgG antibody was used to detect the primary antibody.



Mouse tissue extract (50 µg) was separated by 15% SDS-PAGE, and the membrane was blotted with Parvalbumin antibody (GRP621) diluted at 1:10000. The HRP-conjugated anti-rabbit IgG antibody was used to detect the primary antibody.