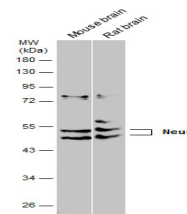


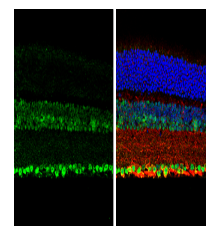
Product Datasheet

NeuN antibody GRP168

Description	RNA-binding protein that regulates alternative splicing events.
Species/Host	Rabbit
Reactivity	Mouse, Rat
Conjugation	Unconjugated
Tested Applications	ICC, IF, IHC-Fr, IHC-P, WB
Immunogen	Carrier-protein conjugated synthetic peptide encompassing a sequence within the N-terminus region of Mouse NeuN. The exact sequence is proprietary.
Form/Appearance	Liquid: 1XPBS, 20% Glycerol (pH7). 0.025% ProClin 300 was added as a preservative.
Concentration	1.06 mg/ml
Storage	Store as concentrated solution. Centrifuge briefly prior to opening vial. For short-term storage (1-2 weeks), store at 4°C. For long-term storage, aliquot and store at -20°C or below. Avoid multiple freeze-thaw cycles.
Note	For research use only.
Isotype	IgG
Clonality	Polyclonal
Purity	Purified by antigen-affinity chromatography.
Uniprot ID	Q8BIF2
Entrez	52897
Dilution Range	WB: 1:500-1:3000, IHC-P: 1:100-1:1000, IHC-Fr: 1:100-1:1000



Various tissue extracts (50 µg) were separated by 10% SDS-PAGE, and the membrane was blotted with NeuN antibody (GRP620) diluted at 1:1000.



NeuN antibody detects NeuN protein expression by immunohistochemical analysis. Sample: Paraffin-Embedded adult mouse retina. Green: NeuN protein stained by NeuN antibody (GRP620) diluted at 1:250. Red: beta Tubulin 3/ TUJ1, stained by beta Tubulin 3/ TUJ1 a