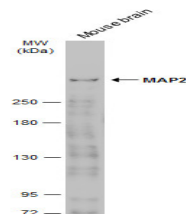


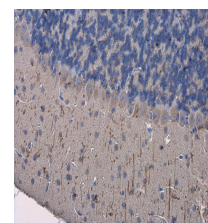
Product Datasheet

MAP2 antibody GRP167

Description	MAP2 antibody
Species/Host	Rabbit
Reactivity	Mouse, Rat
Conjugation	Unconjugated
Tested Applications	ICC, IF, IHC-Fr, IHC-P, WB
Immunogen	Carrier-protein conjugated synthetic peptide encompassing a sequence within the N-terminus region of Mouse MAP2. The exact sequence is proprietary.
Form/Appearance	Liquid: 1XPBS, 1% BSA, 20% Glycerol (pH7). 0.025% ProClin 300 was added as a preservative.
Concentration	0.15 mg/ml
Storage	Store as concentrated solution. Centrifuge briefly prior to opening vial. For short-term storage (1-2 weeks), store at 4°C. For long-term storage, aliquot and store at -20°C or below. Avoid multiple freeze-thaw cycles.
Note	For research use only.
Isotype	IgG
Clonality	Polyclonal
Purity	Purified by antigen-affinity chromatography.
Uniprot ID	P20357
Entrez	17756
Dilution Range	WB: 1:500-1:3000, ICC: 1:100-1:1000, IHC-P: 1:100-1:1000, IHC-Fr: 1:100-1:1000



Mouse tissue extract (10 µg) was separated by 5% SDS-PAGE, and the membrane was blotted with MAP2 antibody (GRP619) diluted at 1:1000. The HRP-conjugated anti-rabbit IgG antibody was used to detect the primary antibody.



MAP2 antibody detects MAP2 protein at cytoplasm in mouse brain by immunohistochemical analysis. Sample: Paraffin-embedded mouse brain. MAP2 antibody (GRP619) diluted at 1:500.