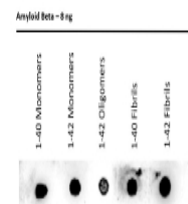


## Product Datasheet

### Abeta (1-11) - Amyloid-Beta peptide 1-11 (high affinity to monomer, oligomer and fibrils) GRP13170

<b>Species/Host</b>	Rabbit
<b>Reactivity</b>	Human
<b>Predicted Reactivity</b>	Bovine, Chicken, Dog, Porcine, Rabbit
<b>Tested Applications</b>	DOT, ELISA
<b>Immunogen</b>	Synthetic peptide chosen from human Abeta (1-11) peptide DAEFRHDSGYE
<b>Form/Appearance</b>	Lyophilized
<b>Storage</b>	Store lyophilized/reconstituted at -20°C; once reconstituted make aliquots to avoid repeated freeze-thaw cycles. Please, remember to spin tubes briefly prior to opening them to avoid any losses that might occur from lyophilized material adhering to the cap or sides of the tubes.
<b>Note</b>	For research use only.
<b>Clonality</b>	Polyclonal
<b>Purity</b>	Affinity purified serum, in PBS pH 7.4
<b>MW</b>	4.5 kDa
<b>Dilution Range</b>	1 : 1000 (Dot), 1:3000 (ELISA)



**Application Notes** Background: Alzheimer's disease (AD) is the most prevalent neurodegenerative disease in the growing population of elderly people. A hallmark of AD is the accumulation of plaques in the brain of AD patients. The plaques predominantly consist of aggregates of amyloid-beta (Abeta), a peptide of 39-42 amino acids generated in vivo by specific, proteolytic cleavage of the amyloid precursor protein. Reconstitution: For reconstitution add 50 µl, of sterile water.