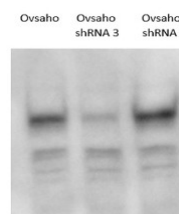


Product Datasheet

LRIG1 - Lig-1 (rabbit antibodies) GRP13167

Species/Host	Rabbit
Reactivity	Human
Predicted Reactivity	Human, Hominidae,
Tested Applications	WB, IHC
Immunogen	KLH-conjugated synthetic peptide from Q96JA1
Form/Appearance	Lyophilized
Storage	Store lyophilized/reconstituted at -20°C; once reconstituted make aliquots to avoid repeated freeze-thaw cycles. Please, remember to spin tubes briefly prior to opening them to avoid any losses that might occur from lyophilized material adhering to the cap or sides of the tubes.
Note	For research use only.
Clonality	Polyclonal
Purity	Affinity purified serum in PBS pH 7.4.
MW	143 kDa
Uniprot ID	Q96JA1
Dilution Range	0.2 µg/ml and 5 µg/ml (IHC), 1:1000 (WB)



Application Notes	Additional Information: Peptide used to elicit Lrig1 antibody is not conserved in Lrig3 protein. IHC was performed on cell pellets made from LRIG1-null HEK293T cells with an inducible LRIG1 allele that had, or had not, been induced to express LRIG1. A specific signal was seen in the antibody range between 0.2 µg/ml and 5 µg/ml. Background: The LRIG1 protein Q96JA1 is coded by a gene on chromosome band 3p14.3, a region known to be deleted in various human cancers. This is considered to be a tumour suppressor gene in humans. LRIG1 is an integral cell-surface membrane protein, expressed by specific cells in various human tissues. Its 143-kDa form might be cleaved into 111-kDa and 32-kDa fragments. The LRIG1 protein may inhibit the growth of glial cell tumours and the down-regulation of the LRIG1 gene may be involved in the development and progression of the tumors. Reconstitution: For reconstitution add 50 µl of sterile water.
--------------------------	---