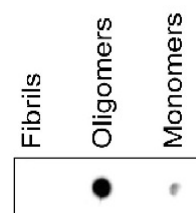


Product Datasheet

ASyO2 - Mouse anti-human alpha-synuclein - oligomer-specific (clone number 51.24) GRP12965

Species/Host	Mouse
Reactivity	Human
Predicted Reactivity	Mouse
Tested Applications	DOT, ELISA, IL



Immunogen	synthetic peptide derived from human alpha-synuclein Glu131-Ala140
Form/Appearance	Lyophilized
Storage	For short time storage please add sodium azide and store at +4°C. For long time storage store lyophilized/reconstituted at -20°C; once reconstituted make aliquots to avoid repeated freeze-thaw cycles. Please, remember to spin tubes briefly prior to opening them to avoid any losses that might occur from lyophilized material adhering to the cap or sides of the tubes.
Note	For research use only.
Isotype	IgG1
Clonality	Monoclonal
Purity	Affinity purified in PBS pH 7.4, no preservatives
MW	14 kDa
Dilution Range	1-2 ug/ml (Dot), 2-4 ug/ml (ELISA capture), 10 ug/ml (IHC)

Application Notes	Background: Alpha-synuclein is normally an unstructured soluble protein that can aggregate to form insoluble fibrils in pathological conditions characterized by Lewy bodies, such as Parkinson's disease, dementia with Lewy-bodies, and multiple system atrophy. In analogy to many other amyloid associated disorders, alpha-synuclein may also form oligomeric assemblies. These small and soluble forms have been suggested to exert a stronger tissue damaging effect as compared to the monomeric and fibrillar counterpart. Using a recently developed technique a monoclonal oligomer-specific antibody has been designed. Reconstitution: For reconstitution add 50 µl of sterile water.
-------------------	--