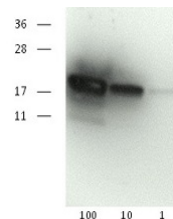


Product Datasheet

SOD1 aa 24-39 - superoxide dismutase 1, soluble (clone number 6D4.G9.C3.2) GRP12959

Species/Host	Mouse
Reactivity	Human
Predicted Reactivity	Chimpanzee, Schizosaccharomyces pombe
Tested Applications	ELISA, WB



Immunogen	KLH-conjugated synthetic peptide derived from human SOD1 sequence P00441. Peptide used to elicit this antibody is not conserved in SOD2, 3 and 4.
------------------	---

Form/Appearance	Lyophilized
------------------------	-------------

Storage	Store lyophilized/reconstituted at -20°C; once reconstituted make aliquots to avoid repeated freeze-thaw cycles. Please, remember to spin tubes briefly prior to opening them to avoid any losses that might occur from lyophilized material adhering to the cap or sides of the tubes.
----------------	---

Note	For research use only.
-------------	------------------------

Isotype	IgG1
----------------	------

Clonality	Monoclonal
------------------	------------

Purity	Affinity purified in PBS, pH 7.4
---------------	----------------------------------

MW	15.9 kDa
-----------	----------

Dilution Range	1 : 1000-1 : 10 000 (ELISA), 1 : 1000 (WB)
-----------------------	--

Application Notes	Background: SOD1 [Cu-Zn] (EC=1.15.1.1) is a cytoplasm localized oxidoreductase which destroys radicals normally produced within the cells and toxic to biological systems. Alternative names: SOD, soluble, indophenoloxidase A, Cu/Zn superoxide dismutase, superoxide dismutase, cytosolic. Reconstitution: For reconstitution add 50 µl of sterile water.
--------------------------	--