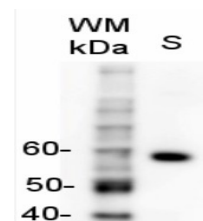


Product Datasheet

Rabbit anti-Goat IgG (H&L), HRP conjugated GRP12236

Species/Host	Rabbit
Reactivity	Goat
Predicted Reactivity	Goat IgG Heavy and Light chains (H&L)
Tested Applications	ELISA, WB, IHC
Immunogen	purified goat IgG, whole molecule
Form/Appearance	Lyophilized
Storage	Store lyophilized material at 2-8°C. For long time storage after reconstitution, dilute the antibody solution with glycerol to a final concentration of 50% glycerol and store as liquid at -20°C, to prevent loss of enzymatic activity. For example, if you have reconstituted 1 mg of antibody in 1.1 ml of sterile water add 1.1 ml of glycerol. Such solution will not freeze in -20°C. If you are using a 1:5000 dilution prior to diluting with glycerol, then you would need to use a 1:2500 dilution after adding glycerol. Prepare working dilution prior to use and then discard. Be sure to mix well but without foaming.
Note	For research use only.
Clonality	Polyclonal
Purity	Purified rabbit IgG
Dilution Range	1 : 10 000 - 1 : 50 000 (ELISA), 1 : 500-1 : 5000 (IHC), 1 : 10 000 - 50 000 (WB)



Application Notes Additional Information: No reactivity is observed to non-immunoglobulin goat serum proteins based in immunoelectrophoresis. BSA and milk have to be replaced by other blocking reagents, like donkey serum or commercial formulations which are free from bovine IgG. HRP-conjugate is supplied in 10 mM Sodium Phosphate, 0.15 M Sodium Chloride, pH 7.2, 10 % (w/v) BSA, Protease/IgG free 0.1 % (v/v) of Kathon CG is used as preservative. Background: Rabbit anti-goat IgG is a secondary antibody conjugated to HRP (horse radish peroxidase) which binds to all goat immunoglobulins in immunological assays. Reconstitution: For reconstitution add 1.1 ml of sterile water. Let it stand 30 minutes at room temperature to dissolve. Prepare fresh working dilutions daily.