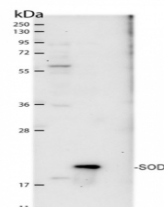


## Product Datasheet

### SOD1 aa 03-20 - superoxide dismutase 1, soluble GRP12224

<b>Species/Host</b>	Rabbit
<b>Reactivity</b>	Human
<b>Predicted Reactivity</b>	Bovine, Goat, Crab, Guinea Pig, Horse, Mouse, Pig, Rat, Sheep, Yeast
<b>Tested Applications</b>	WB
<b>Immunogen</b>	KLH-conjugated synthetic peptide derived from human SOD1 protein sequence P00441
<b>Form/Appearance</b>	Lyophilized
<b>Storage</b>	Store lyophilized/reconstituted at -20°C; once reconstituted make aliquots to avoid repeated freeze-thaw cycles. Please, remember to spin tubes briefly prior to opening them to avoid any losses that might occur from lyophilized material adhering to the cap or sides of the tubes.
<b>Note</b>	For research use only.
<b>Clonality</b>	Polyclonal
<b>Purity</b>	Serum
<b>MW</b>	15.9 kDa
<b>Uniprot ID</b>	P00441
<b>Dilution Range</b>	1 : 10 000 (WB)



**Application Notes** Additional Information: Peptide used to elicit this antibody is not conserved in SOD2,3 and 4. Background: SOD1 [Cu-Zn] (EC=1.15.1.1) is a cytoplasm localized oxidoreductase which destroys radicals normally produced within the cells and toxic to biological systems. Alternative names: SOD, soluble, indophenoloxidase A, Cu/Zn superoxide dismutase, superoxide dismutase, cytosolic Reconstitution: For reconstitution add 100 µl of sterile water