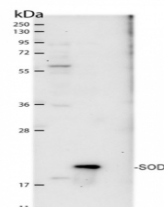


Product Datasheet

SOD1 aa 03-20 - superoxide dismutase 1, soluble GRP12224

Species/Host	Rabbit
Reactivity	Human
Predicted Reactivity	Bovine, Goat, Crab, Guinea Pig, Horse, Mouse, Pig, Rat, Sheep, Yeast
Tested Applications	WB
Immunogen	KLH-conjugated synthetic peptide derived from human SOD1 protein sequence P00441
Form/Appearance	Lyophilized
Storage	Store lyophilized/reconstituted at -20°C; once reconstituted make aliquots to avoid repeated freeze-thaw cycles. Please, remember to spin tubes briefly prior to opening them to avoid any losses that might occur from lyophilized material adhering to the cap or sides of the tubes.
Note	For research use only.
Clonality	Polyclonal
Purity	Serum
MW	15.9 kDa
Uniprot ID	P00441
Dilution Range	1 : 10 000 (WB)



Application Notes Additional Information: Peptide used to elicit this antibody is not conserved in SOD2,3 and 4. Background: SOD1 [Cu-Zn] (EC=1.15.1.1) is a cytoplasm localized oxidoreductase which destroys radicals normally produced within the cells and toxic to biological systems. Alternative names: SOD, soluble, indophenoloxidase A, Cu/Zn superoxide dismutase, superoxide dismutase, cytosolic Reconstitution: For reconstitution add 100 µl of sterile water