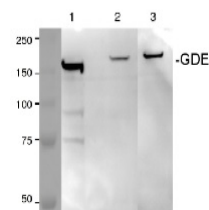


## Product Datasheet

### GDE / AGL - Glycogen debranching enzyme GRP12222

<b>Species/Host</b>	Rabbit
<b>Reactivity</b>	Human, Mouse, Rat, Rabbit
<b>Predicted Reactivity</b>	Dog
<b>Tested Applications</b>	IP, WB
<b>Immunogen</b>	KLH-conjugated peptide derived from the sequence of human glycogen debranching enzyme UniProt: P35573
<b>Form/Appearance</b>	Lyophilized
<b>Storage</b>	Store lyophilized/reconstituted at -20°C; once reconstituted make aliquots to avoid repeated freeze-thaw cycles. Please, remember to spin tubes briefly prior to opening them to avoid any losses that might occur from lyophilized material adhering to the cap or sides of the tubes.
<b>Note</b>	For research use only.
<b>Clonality</b>	Polyclonal
<b>Purity</b>	Affinity purified serum
<b>MW</b>	175 kDa
<b>Uniprot ID</b>	P35573
<b>Dilution Range</b>	5 µg (IP), 1 : 2000 (WB)



**Application Notes** Additional Information: This antibody can detect GDE in crude tissue homogenate in both, liver and muscle tissue and is able to immunoprecipitate GDE. Antibody will work as an excellent marker for glycogen. In tissues with no glycogen expression there will be no signal using this antibody. Background: Synonyms: Glycogen debrancher, 4-alpha-glucanotransferase (EC=2.4.1.25), Oligo-1,4-1,4-glucantransferase, amylo-alpha-1,6-glucosidase, amylo-1,6-glucosidase (EC=3.2.1.33), Dextrin 6-alpha-D-glucosidase, amylo-1,6-glucosidase, 4-alpha-glucanotransferase Reconstitution: For reconstitution add 200 µl of sterile water.