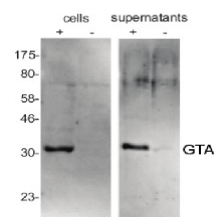


## Product Datasheet

### GTA MCP - Gene Transfer Agent (GTA) major capsid protein (MCP) GRP12221

Species/Host	Rabbit
Reactivity	Bacteria
Predicted Reactivity	Rhodobacterales Species of your interest not listed? Contact us
Tested Applications	WB



Immunogen	KLH-conjugated conserved peptide sequence found in the Gene Transfer Agent (GTA) major capsid protein (MCP) encoded in Bacteria within the Rhodobacterales order of the class alpha-Proteobacteria including Rhodobacter sphaeroides UniProt: Q3J3K4
-----------	--

Form/Appearance	Lyophilized
-----------------	-------------

Storage	Store lyophilized/reconstituted at -20°C; once reconstituted make aliquots to avoid repeated freeze-thaw cycles. Please, remember to spin tubes briefly prior to opening them to avoid any losses that might occur from lyophilized material adhering to the cap or sides of the tubes.
---------	---

Note	For research use only.
------	------------------------

Clonality	Polyclonal
-----------	------------

Purity	Serum
--------	-------

MW	31.4 / 32 kDa (predicted mature capsid protein of Rhodobacter capsulatus)
----	---

Uniprot ID	Q3J3K4
------------	--------

Dilution Range	1 : 1000 (WB)
----------------	---------------

Application Notes	Additional Information: This product can be sold containing ProClin if requested. Background: Gene Transfer Agents (GTAs) are bacteriophage-like particles which function as a means to package and transfer genomic DNA between bacterial cells. GTA-mediated gene transfer might be an important phenomenon in natural microbial communities. Reconstitution: For reconstitution add 200 µl of sterile distilled water.
-------------------	---