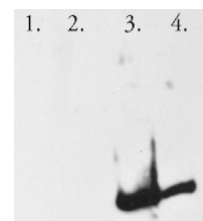


Product Datasheet

SNCA - Alpha-synuclein GRP12219

Species/Host	Rabbit
Reactivity	Human
Predicted Reactivity	Primates, Chimpanzee, Gorilla
Tested Applications	ELISA, WB, IL
Immunogen	recombinant, full length, human alpha-synuclein UniProt: P37840, epitope was mapped between amino acid 1-15
Form/Appearance	Lyophilized
Storage	Store lyophilized/reconstituted at -20°C; once reconstituted make aliquots to avoid repeated freeze-thaw cycles. Please, remember to spin tubes briefly prior to opening them to avoid any losses that might occur from lyophilized material adhering to the cap or sides of the tubes.
Note	For research use only.
Clonality	Polyclonal
Purity	Serum
MW	14 kDa
Uniprot ID	P37840
Dilution Range	1 : 3000 (ELISA), 1-2 µg/ml (IL), 1 : 1000 (WB)



Application Notes	Additional Information: Immunolocalization: human tissue was paraffin-embedded and sectioned. De-waxed and rehydrated in an ethanol gradient. Antigens were retrieved in sodium citrate buffer (pH 6) at 95°C for 1 h. The tissue sections were separately incubated for 1 h at RT with primary antibody and antibody binding was visualized with IgG Peroxidase Reagent Kit. Background: Alpha-synuclein is normally an unstructured soluble protein that can aggregate to form insoluble fibrils in pathological conditions characterized by Lewy bodies, such as Parkinson's disease, dementia with Lewy-bodies, and multiple system atrophy. Reconstitution: For reconstitution add 100 µl of sterile water.
--------------------------	--